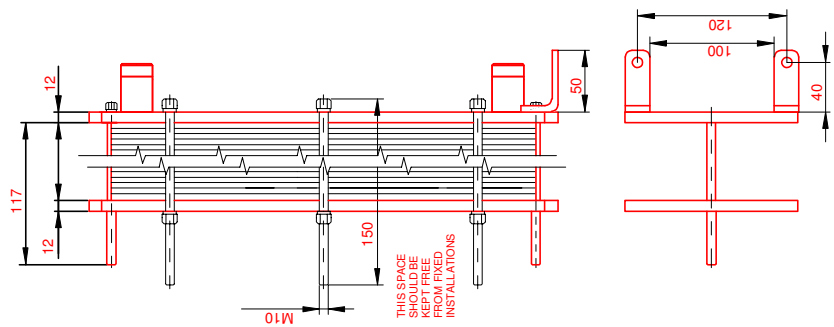
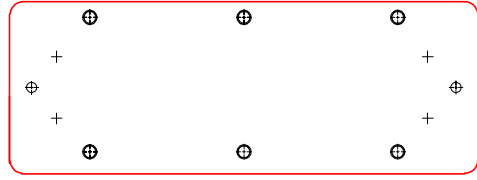
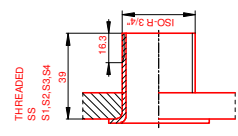
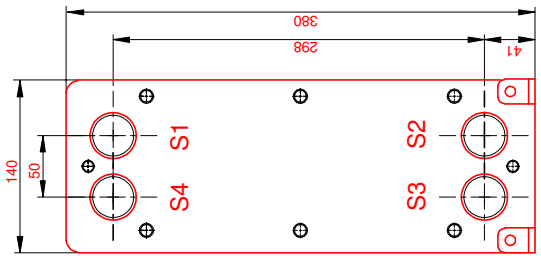


PRESSURE PLATE
(MOVABLE)
SECTION A-A



FRAME PLATE
(FIXED)



REMARKS:	SIDE 1	SIDE 2		
TEST PRESSURE	20.8 bar	20.8 bar	GASKET	NBRP CLIP-ON
DESIGN PRESSURE	16 bar	16 bar	PLATE MATERIAL	ALLOY 316
MAX TEMPERATURE	120 °C	120 °C	PLATE THICKNESS	0.50 mm
MIN TEMPERATURE	0 °C	0 °C		
WEIGHT WITH WATER	20 kg		HEAT LOAD	120 kW

TOTAL LENGTH 165
TOTAL WIDTH 140
TOTAL HEIGHT 380

Do not use this drawing for foundation bolting or piping layout.

ALL DIMENSIONS IN MILLIMETERS


SIDE	MEDIA	F.D.G.	INLET	TEMP.	OUTLET	TEMP.	FLOW RATE	PRESSURE DROP
1	Water		S1	80.0 °C	S2	60.0 °C	5.3 m³/h	39.12 kPa
2	Water		S3	10.0 °C	S4	60.0 °C	2.1 m³/h	7.844 kPa

SUPPLIER	REF.	ITEM NO.
		120 KW 80/60-10/60 SCP
AGENT / REF.		
CUSTOMER NAME / REF. NO.		
SIGN.	RISK CATEGORY	
	N/A	

PLATE HEAT EXCHANGER

T2-BFG

ALS



black sea general 5.11.2012

DATE	REV NO.
2012-11-05	0